

# CAMILLE SOFA



The Camille sofa is the perfect mix of Scandinavian and mid-century aesthetics.

Its fully integrated back and foam seat cushions make it a very low maintenance sofa. The range includes several sofa sizes, ottomans and an armchair.

#### OPTIONS:

Custom sizes, modular or chaise, are available. Please contact us for details.

#### MATERIALS & FINISHES:

Hardwood and plywood frame with high resilience and luxura foams.

Upholstery: A range of upholstery is available

Solid oak feet with satin lacquer:



Black

Espresso

Hazelnut

Clear

#### DIMENSIONS:

##### Armchair

---

L:1050 x W:850 x H: 800mm

##### 2.0 seater

---

L:1700 x W:850 x H: 800mm

##### 2.5 seater

---

L:2000 x W:850 x H: 800mm

##### 3.0 seater

---

L:2350 x W:850 x H: 800mm

##### Small ottoman

---

L:750 x W:750 x H: 420mm

##### Large ottoman

---

L:1050 x W:750 x H: 420mm

# CAMILLE SOFA

## FABRIC SELECTION

### CLEO - VELVET

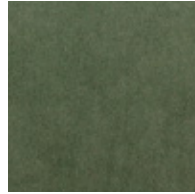
Composition: 100% Polyester



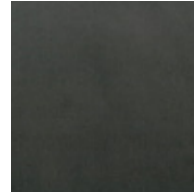
Blush



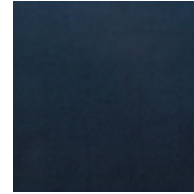
Brass



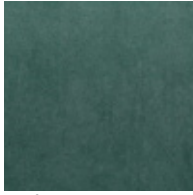
Fern



Granite



Ink



Jade



Truffle

### HUSK

Composition: 37% viscose, 24% polyester, 21% cotton, 18% linen



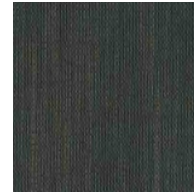
Agave



Cement



Cloud



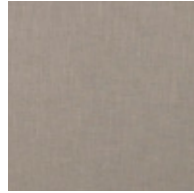
Graphite



Polo



Powder



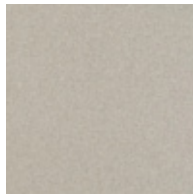
Smoke



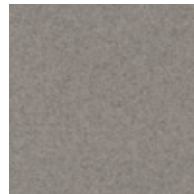
Wattle

### AUGUSTUS

Composition: 70% wool, 25% polyamide, 5% Acrylic



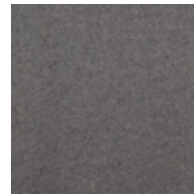
Birch



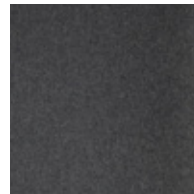
Pumice



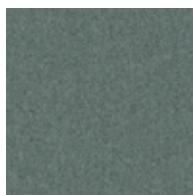
Zinc



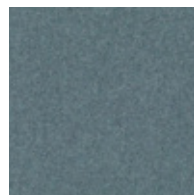
Wolf



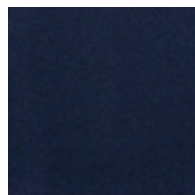
Armour



Seaglass



Ocean



Midnight

\*\* Custom fabrics or COM (customer's own materials) are available to trade only.

# CAMILLE SOFA

## FABRIC SELECTION

### ATELIER VELVET

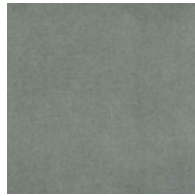
Composition: 92% Polyester, 5% Cotton, 3% Latex.



Himalayan



Decadent



Minx



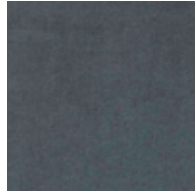
Dreamy



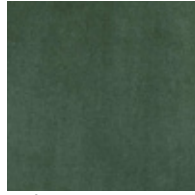
Quartz



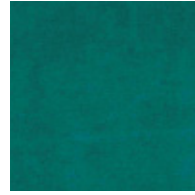
Runway



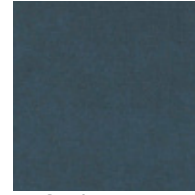
Zen



Palm



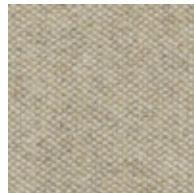
Impress



Oxford

### MIX

Composition: 65% wool, 20% nylon, 15% alpaca



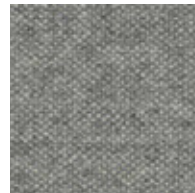
Ivory



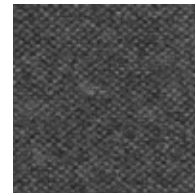
Taupe



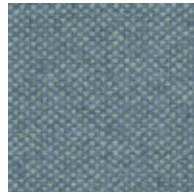
Accorn



Xenon



Quartz



Glacier



Reef



Blueberry

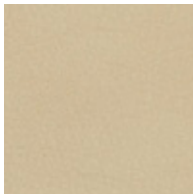
\*\* Custom fabrics or COM (customer's own materials) are available to trade only.

# CAMILLE SOFA

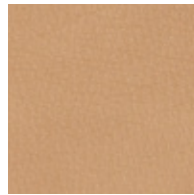
## LEATHER SELECTION

### LEATHER NATUR

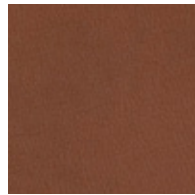
Type: Supple semi-aniline leather with a slight grain texture. Source: Italy



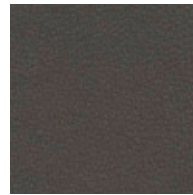
Stone



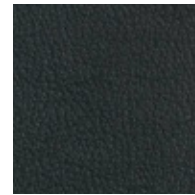
Camel



Toffee



Coffee



Black

### LEATHER ANTICO

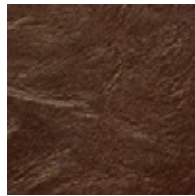
Type: Aniline with an aged Pull up effect. Source: Italy



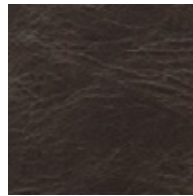
Torrone



Sella



Crosta



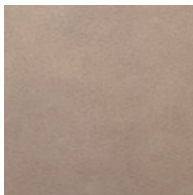
Fumo



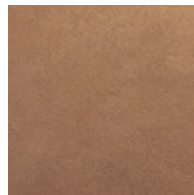
Nero

### LEATHER BRUSIO

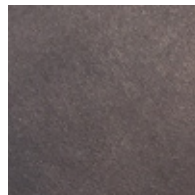
Type: Aniline leather with a distinctive matt appearance with a beeswax finish. Source: Italy



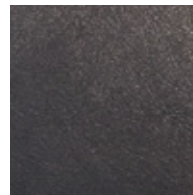
Cashew



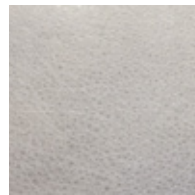
Barley



Mocca



Nero



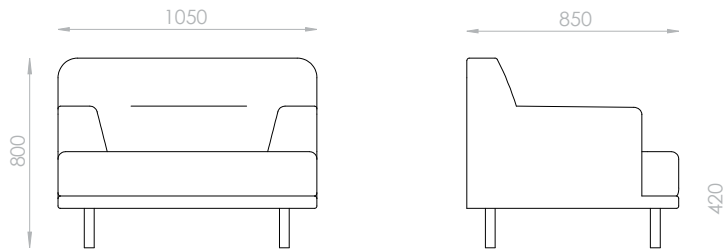
Fog

\*\* Custom fabrics or COM (customer's own materials) are available to trade only.

# CAMILLE SOFA

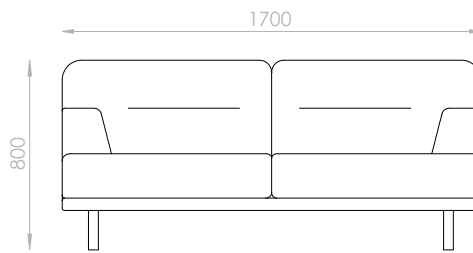
## Armchair

L:1050 x W:850 x H: 800mm



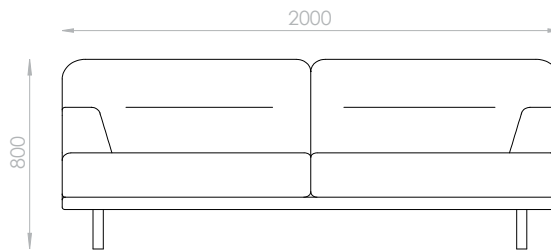
## 2.0 seater

L:1700 x W:850 x H: 800mm



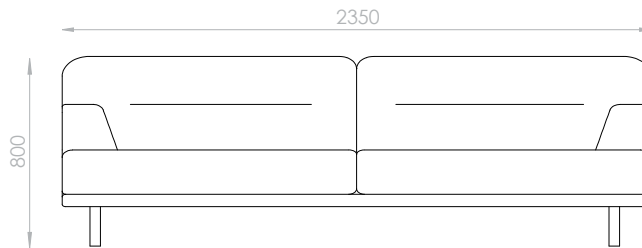
## 2.5 seater

L:2000 x W:850 x H: 800mm



## 3.0 seater

L:2350 x W:850 x H: 800mm



## Small ottoman

L:750 x W:750 x H: 420mm



## Large ottoman

L:1050 x W:750 x H: 420mm

