

# COCO OTTOMANS



A reinvention of the classic ottoman, Coco feeds the senses with colour, texture and shape.

With sizes ranging from small to large and a comfortable medium-firm seat, Coco works well as either additional seating or a coffee table. It is also perfect for breakout areas in offices.

Custom sizes available. Contact us for pricing.  
Leather upholstery available upon request.

## MATERIALS & FINISHES:

Hardwood and plywood frame with high resilience foam.  
Upholstery: fabrics or leather  
Timber Feet: Tasmanian oak, clear finish.



Clear

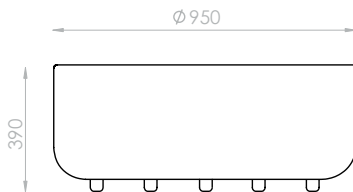


Black

## DIMENSIONS:

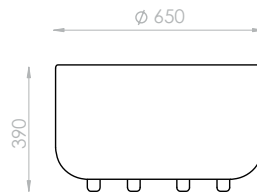
### Large

Dia: 950 x H:390mm



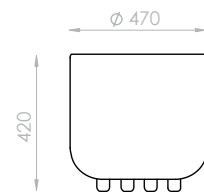
### Medium

Dia: 650 x H:390mm



### Small

Dia: 470 x H:420mm



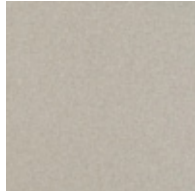
# COCO OTTOMANS

## FABRIC SELECTION

### WOOL BLENDS

#### AUGUSTUS

Composition: 70% wool, 25% polyamide, 5% Acrylic



Birch



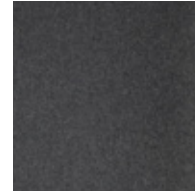
Pumice



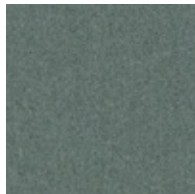
Zinc



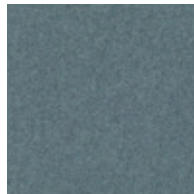
Wolf



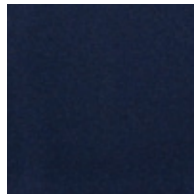
Armour



Seaglass



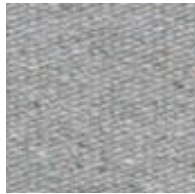
Ocean



Midnight

#### PERSIS

Composition: 35% wool, 30% acrylic, 28% polyester, 7% cotton



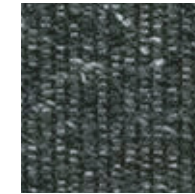
Gravel



Quarry



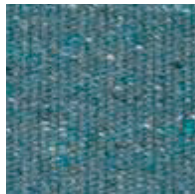
Slate



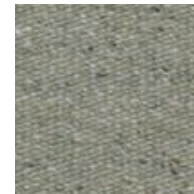
Cinders



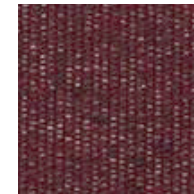
Ink



Coast



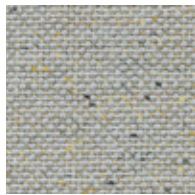
Lichen



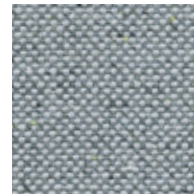
Currant

#### CALIBRE

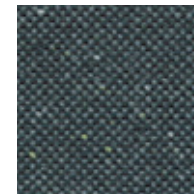
Composition: 82% Australian wool, 18% nylon



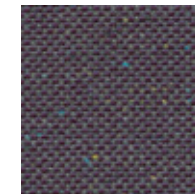
Distinction



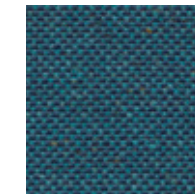
Integrity



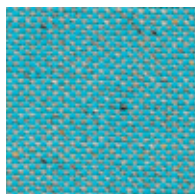
Elite



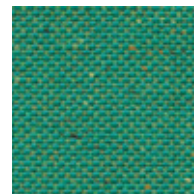
Grade



Icon



Virtue



Fine

\*\* Custom fabrics or COM (customer's own materials) are available to trade only.

\*\* Some materials will have more stretch than others. Depending on your selection, the ottomans may have additional seams and a discreet zip.

# COCO OTTOMANS

## FABRIC SELECTION

### COCOON

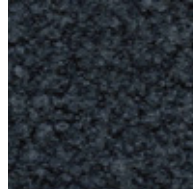
73% Australian wool, 17% acrylic, 8% polyester, 2% nylon



Almond



Shadow



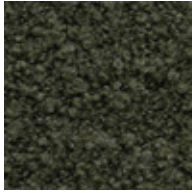
Ink



Charcoal



Dapple



Glen

\*\* Custom fabrics or COM (customer's own materials) are available to trade only.

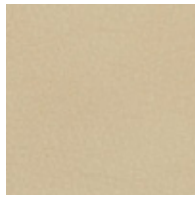
\*\* Some materials will have more stretch than others. Depending on your selection, the ottomans may have additional seams and a discreet zip.

# COCO OTTOMANS

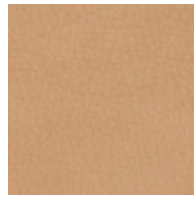
## LEATHER SELECTION

### LEATHER NATUR

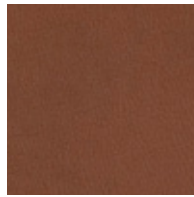
Type: Supple semi-aniline leather with a slight grain texture. Source: Italy



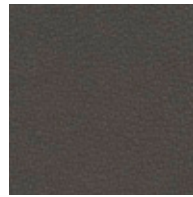
Stone



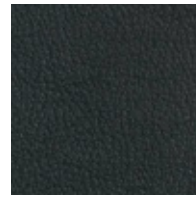
Camel



Toffee



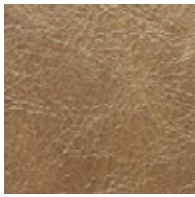
Coffee



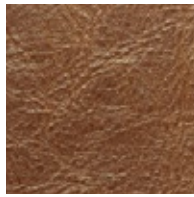
Black

### LEATHER ANTICO

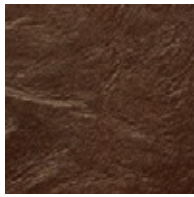
Type: Aniline with an aged Pull up effect. Source: Italy



Torrone



Sella



Crosta



Fumo



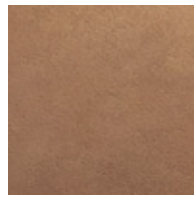
Nero

### LEATHER BRUSIO

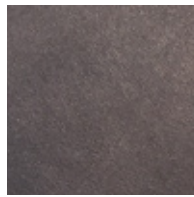
Type: Aniline leather with a distinctive matt appearance with a beeswax finish. Source: Italy



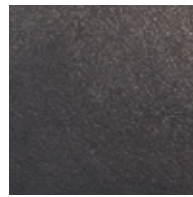
Cashew



Barley



Mocca



Nero



Fog