

CINCH OTTOMANS



Crafted with precision in Melbourne, our Cinch Ottoman features a bold design that effortlessly adapts to any space. Its sleek, minimalist silhouette seamlessly integrates into modern living rooms, cozy reading nooks, or vibrant commercial settings.

OPTIONS:

Custom sizes or shapes are available.

MATERIALS & FINISHES:

Hardwood and plywood frame with high resilience foams.

On plastic glides.

Upholstery: A range of upholstery is available

DIMENSIONS:

Small ottoman

dia: 500 x H: 420mm

Medium ottoman

dia: 600 x H: 380mm

Large ottoman

dia: 900 x H: 380mm

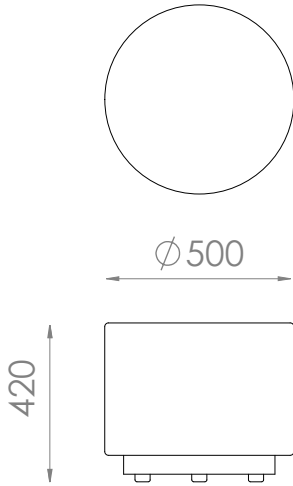
Extra Large ottoman

dia: 1200 x H: 380mm

CINCH OTTOMANS

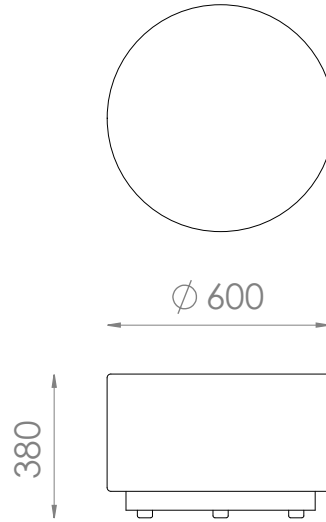
Small ottoman

dia: 500 x H: 420mm



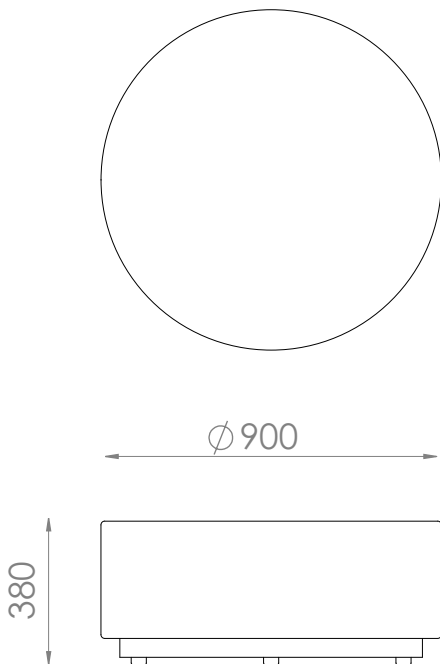
Medium ottoman

dia: 600 x H: 380mm



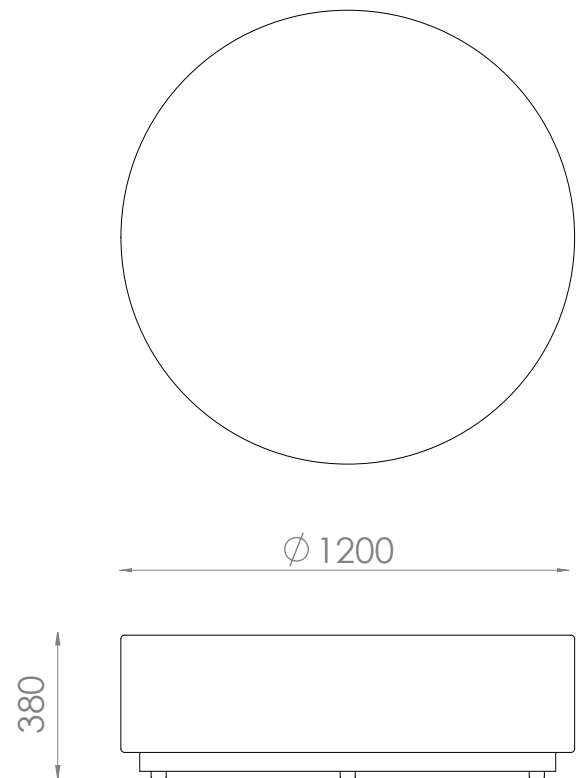
Large ottoman

dia: 900 x H: 380mm



Extra Large ottoman

dia: 1200 x H: 380mm



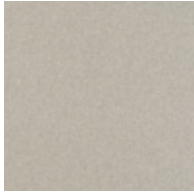
CINCH OTTOMANS

FABRIC SELECTION

WOOL BLENDS

AUGUSTUS

Composition: 70% wool, 25% polyamide, 5% Acrylic



Birch



Pumice



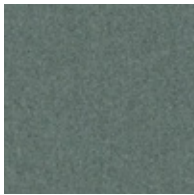
Zinc



Wolf



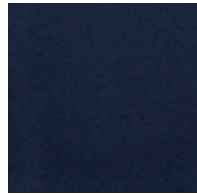
Armour



Seaglass



Ocean



Midnight

COCOON

73% Australian wool, 17% acrylic, 8% polyester, 2% nylon



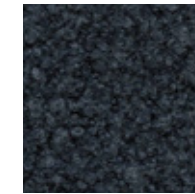
Mist



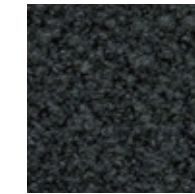
Almond



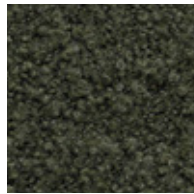
Shadow



Ink



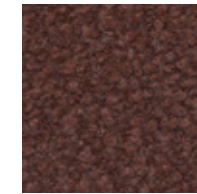
Charcoal



Glen



Ochre



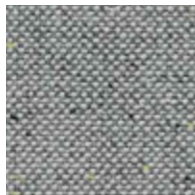
Anise

CALIBRE

Composition: 82% Australian wool, 18% nylon



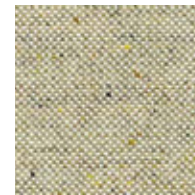
Dandy



Integrity



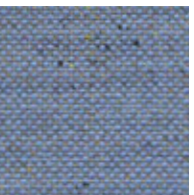
Esteem



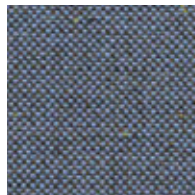
Worth



Distinction



Luminary



Ultimate



Opus

** Custom fabrics or COM (customer's own materials) are available to trade only.

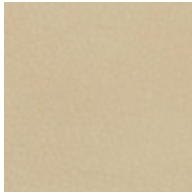
** Some materials will have more stretch than others. Depending on your selection, the ottomans may have additional seams and a discreet zip.

CINCH OTTOMANS

LEATHER SELECTION

LEATHER NATUR

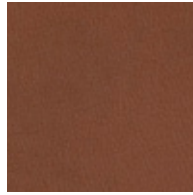
Type: Supple semi-aniline leather with a slight grain texture. Source: Italy



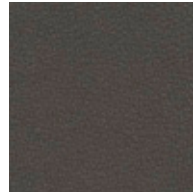
Stone



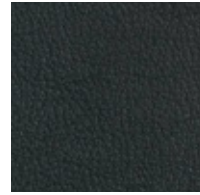
Camel



Toffee



Coffee



Black

LEATHER ANTICO

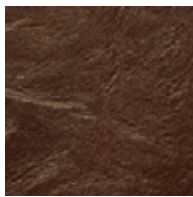
Type: Aniline with an aged Pull up effect. Source: Italy



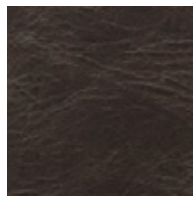
Torrone



Sella



Crosta



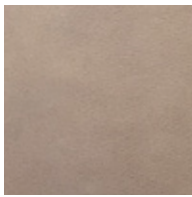
Fumo



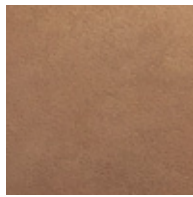
Nero

LEATHER BRUSIO

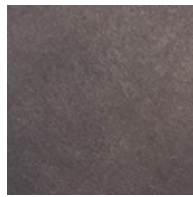
Type: Aniline leather with a distinctive matt appearance with a beeswax finish. Source: Italy



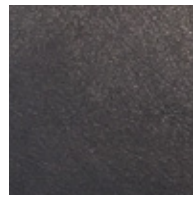
Cashew



Barley



Mocca



Nero



Fog

** Custom fabrics or COM (customer's own materials) are available to trade only.

** Some materials will have more stretch than others. Depending on your selection, the ottomans may have additional seams and a discreet zip.