

FLO ARMCHAIR



With a beautiful simple solid timber frame, the armchair has a sturdy feel yet has a very light profile and footprint. Well studied proportions made it an extremely comfortable chair.

Its fully integrated back and foam seat cushions make it a very low maintenance chair. Perfect for any residential or commercial projects.

OPTIONS:

Custom timber & finishes are available.
Timber sub-plate below seat cushion is optional.

MATERIALS & FINISHES:

Frame in solid American oak in below finishes
Upholstery: high resilience and luxura foams.
A range of fabric and leather upholstery is available

Solid American oak with satin lacquer:



Almost Black

Espresso

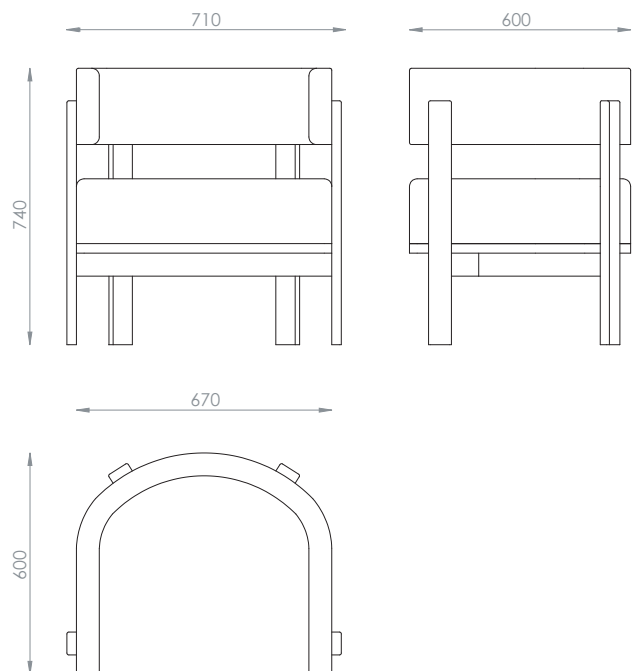
Hazelnut

Clear

DIMENSIONS:

Armchair

W:710 x D:600 x H:740mm



FLO ARMCHAIR

FABRIC SELECTION

HUDSON

Composition: 50% Polyester, 30% linen, 20% cotton



Flax



Ice



Jade



Mustard



Ocean



Seafoam



Steel

HUSK

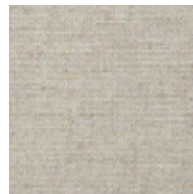
Composition: 37% viscose, 24% polyester, 21% cotton, 18% linen



Agave



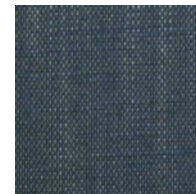
Cement



Cloud



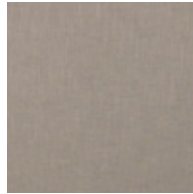
Graphite



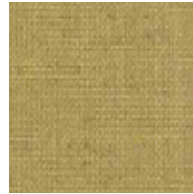
Polo



Powder



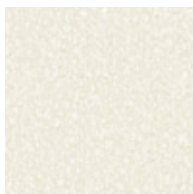
Smoke



Wattle

ALPINE

Composition: 77% Polyacrylic, 22% Polyester, 1% Viscose



Merino



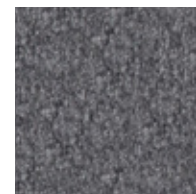
Pumice



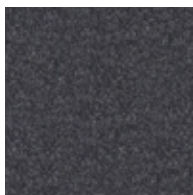
Sable



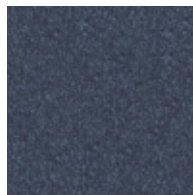
Silver



Slate



Graphite



Midnight



Artichoke

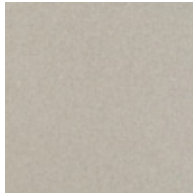
** Custom fabrics or COM (customer's own materials) are available to trade only.

FLO ARMCHAIR

FABRIC SELECTION

AUGUSTUS

Composition: 70% wool, 25% polyamide, 5% Acrylic



Birch



Pumice



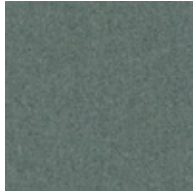
Zinc



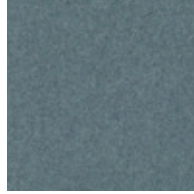
Wolf



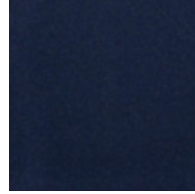
Armour



Seaglass



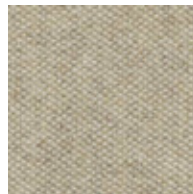
Ocean



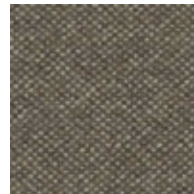
Midnight

MIX

Composition: 65% wool, 20% nylon, 15% alpaca



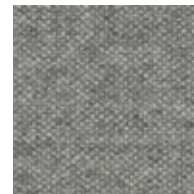
Ivory



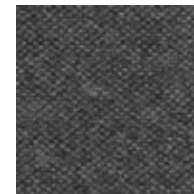
Taupe



Accorn



Xenon



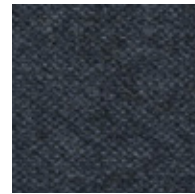
Quartz



Glacier



Reef



Blueberry

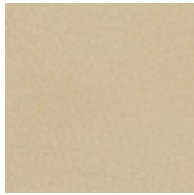
** Custom fabrics or COM (customer's own materials) are available to trade only.

FLO ARMCHAIR

LEATHER SELECTION

LEATHER NATUR

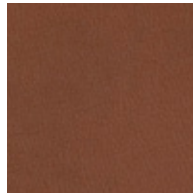
Type: Supple semi-aniline leather with a slight grain texture. Source: Italy



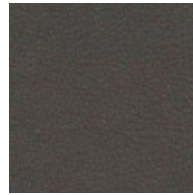
Stone



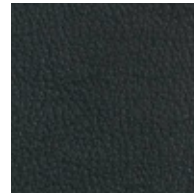
Camel



Toffee



Coffee



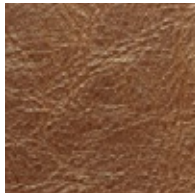
Black

LEATHER ANTICO

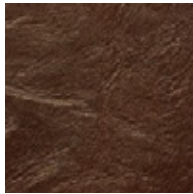
Type: Aniline with an aged Pull up effect. Source: Italy



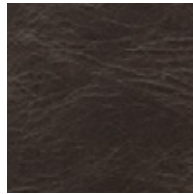
Torrone



Sella



Crosta



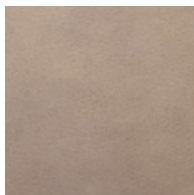
Fumo



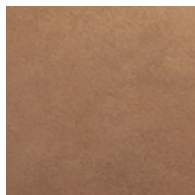
Nero

LEATHER BRUSIO

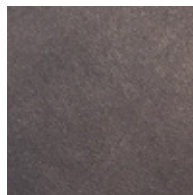
Type: Aniline leather with a distinctive matt appearance with a beeswax finish. Source: Italy



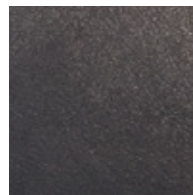
Cashew



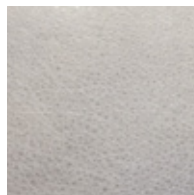
Barley



Mocca



Nero



Fog

** Custom fabrics or COM (customer's own materials) are available to trade only.