

FLO OTTOMAN



Flo ottoman 1200 in Hazelnut finish and fabric Atelier col Hunter. Styled by The Design School

With a beautiful simple solid timber frame, the armchair has a sturdy feel yet has a very light profile and footprint. Well studied proportions made it an extremely comfortable chair.

Its fully integrated back and foam seat cushions make it a very low maintenance chair. Perfect for any residential or commercial projects.

Custom timber & finishes are available.
Please contact us for details.

Frame in solid American oak in below finishes
Upholstery: high resilience and luxura foams.
A range of fabric and leather upholstery is available

Solid American oak with satin lacquer:



Almost Black Espresso Hazelnut Clear

DIMENSIONS:

Small

L: 1200 x D:450 x H:450mm

Medium

L: 1500 x D:450 x H:450mm

Large

L: 1800 x D:450 x H:450mm

FLO OTTOMAN

FABRIC SELECTION

CLEO - VELVET

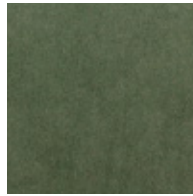
Composition: 100% Polyester



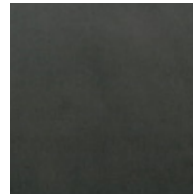
Blush



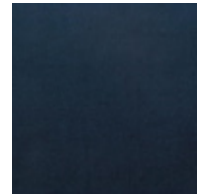
Brass



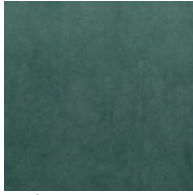
Fern



Granite



Ink



Jade



Truffle

HUDSON

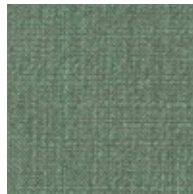
Composition: 50% Polyester, 30% linen, 20% cotton



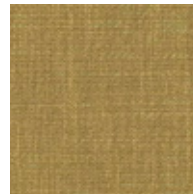
Flax



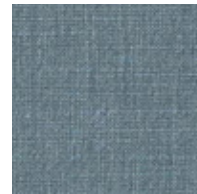
Ice



Jade



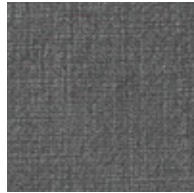
Mustard



Ocean



Seafoam



Steel

HUSK

Composition: 37% viscose, 24% polyester, 21% cotton, 18% linen



Agave



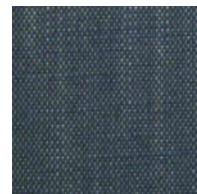
Cement



Cloud



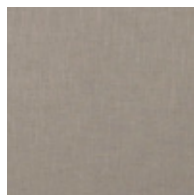
Graphite



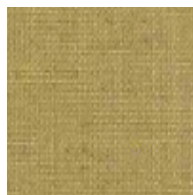
Polo



Powder



Smoke



Wattle

** Custom fabrics or COM (customer's own materials) are available to trade only.

FLO OTTOMAN

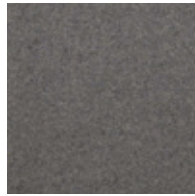
FABRIC SELECTION

AUGUSTUS

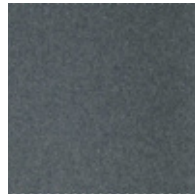
Composition: 70% wool, 25% polyamide, 5% Acrylic



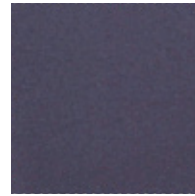
Linen



Wolf



Armour



Eggplant



Midnight



Marshmallow



Glacier



Amazon

ATELIER VELVET

Composition: 92% Polyester, 5% Cotton, 3% Latex.



Himalayan



Decadent



Minx



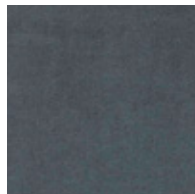
Dreamy



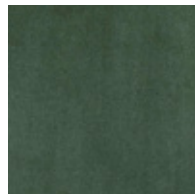
Quartz



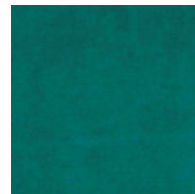
Runway



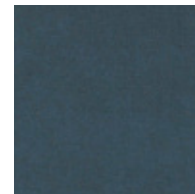
Zen



Palm



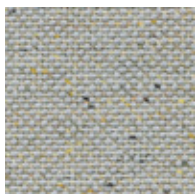
Impress



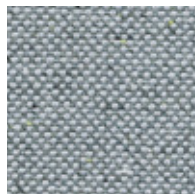
Oxford

CALIBRE

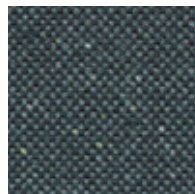
Composition: 82% Australian wool, 18% nylon



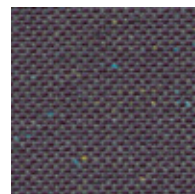
Distinction



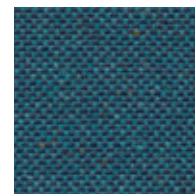
Integrity



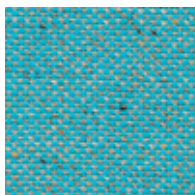
Elite



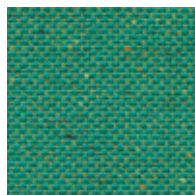
Grade



Icon



Virtue



Fine

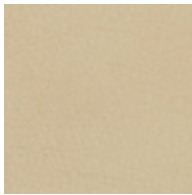
** Custom fabrics or COM (customer's own materials) are available to trade only.

FLO OTTOMAN

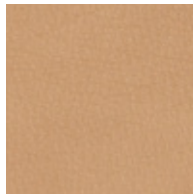
LEATHER SELECTION

LEATHER NATUR

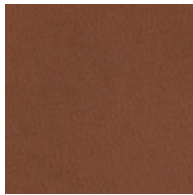
Type: Supple semi-aniline leather with a slight grain texture. Source: Italy



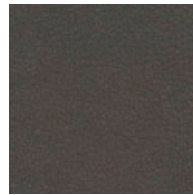
Stone



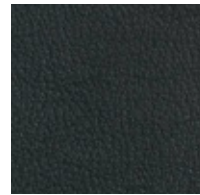
Camel



Toffee



Coffee



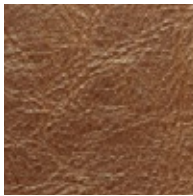
Black

LEATHER ANTICO

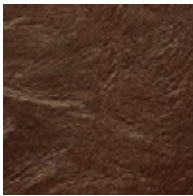
Type: Aniline with an aged Pull up effect. Source: Italy



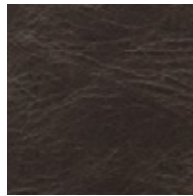
Torrone



Sella



Crosta



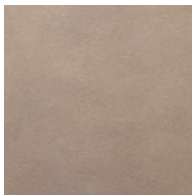
Fumo



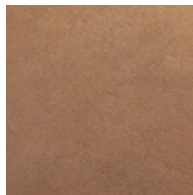
Nero

LEATHER BRUSIO

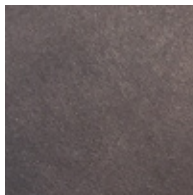
Type: Aniline leather with a distinctive matt appearance with a beeswax finish. Source: Italy



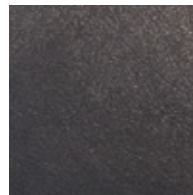
Cashew



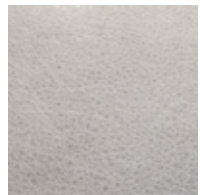
Barley



Mocca



Nero



Fog

** Custom fabrics or COM (customer's own materials) are available to trade only.