

TOULOUSE SOFA



The Toulouse sofa range is defined by a sleek and contemporary aesthetic. With its slim and modern frame combined with soft and casual seating, the sofa will suit a wide range of interiors.

The collection extends to several larger sofa sizes, ottomans and an armchair to complement any family home or commercial space. The legs are powdercoated black steel and fabric or leather upholstery can be specified to suit any projects.

OPTIONS:

- Two sofa depth options: 850 or 950mm
- Cushion option 1: Seats and backs in high resilience foams with channeled feather/fiber wrap.
- Cushion option 2: Seats and backs in high resilience foam with luxura foam top.
- Custom sizes, modular or chaise, are available. Please contact us for details.

MATERIALS & FINISHES:

Hardwood, steel and plywood frame.
a range of textiles & leathers.

Powdercoated metal feet:



Black

DIMENSIONS:

Armchair

L:960 x D:850/950 x H: 810mm

2.5 seater

L:1860 x D:850/950 x H: 810mm

3.0 seater

L:2160 x D:850/950 x H: 810mm

3.5 seater

L:2460 x D:850/950 x H: 810mm

4.0 seater

L:2760 x D:850/950 x H: 810mm

Small ottoman

L:750 x W:750 x H: 400mm

Medium ottoman

L:930 x W:850 x H: 400mm

Large ottoman

L:1080 x W:850 x H: 400mm

TOULOUSE SOFA

FABRIC SELECTION

HUDSON

Composition: 50% Polyester, 30% linen, 20% cotton



Flax



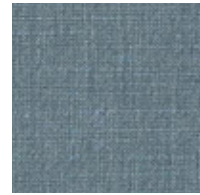
Ice



Jade



Mustard



Ocean



Seafoam



Steel

HUSK

Composition: 37% viscose, 24% polyester, 21% cotton, 18% linen



Agave



Cement



Cloud



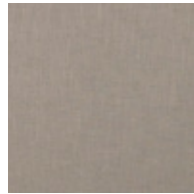
Graphite



Polo



Powder



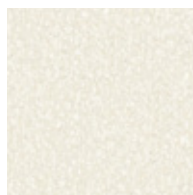
Smoke



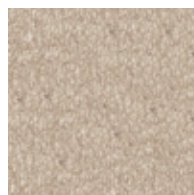
Wattle

ALPINE

Composition: 77% Polyacrylic, 22% Polyester, 1% Viscose



Merino



Pumice



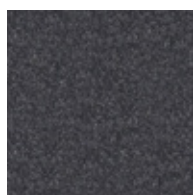
Sable



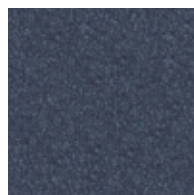
Silver



Slate



Graphite



Midnight



Artichoke

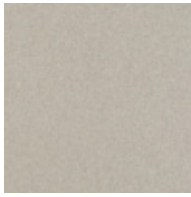
** Custom fabrics or COM (customer's own materials) are available to trade only.

TOULOUSE SOFA

FABRIC SELECTION

AUGUSTUS

Composition: 70% wool, 25% polyamide, 5% Acrylic



Birch



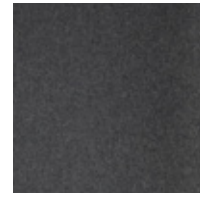
Pumice



Zinc



Wolf



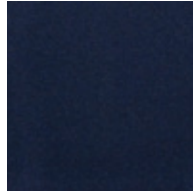
Armour



Seaglass



Ocean



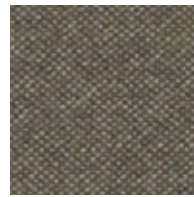
Midnight

MIX

Composition: 65% wool, 20% nylon, 15% alpaca



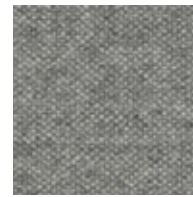
Ivory



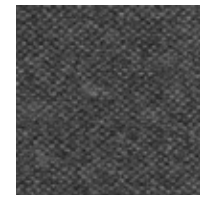
Taupe



Accorn



Xenon



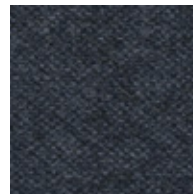
Quartz



Glacier



Reef



Blueberry

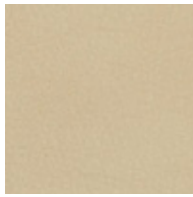
** Custom fabrics or COM (customer's own materials) are available to trade only.

TOULOUSE SOFA

LEATHER SELECTION

LEATHER NATUR

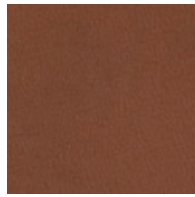
Type: Supple semi-aniline leather with a slight grain texture. Source: Italy



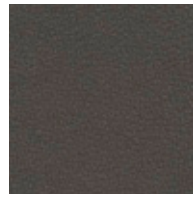
Stone



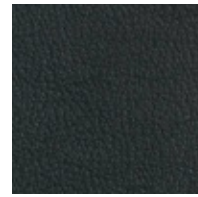
Camel



Toffee



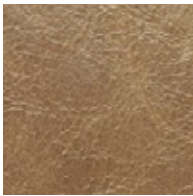
Coffee



Black

LEATHER ANTICO

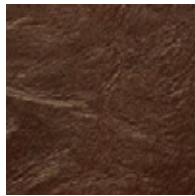
Type: Aniline with an aged Pull up effect. Source: Italy



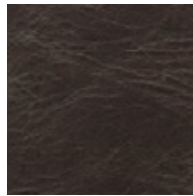
Torrone



Sella



Crosta



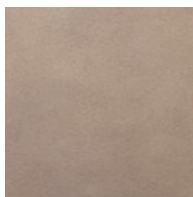
Fumo



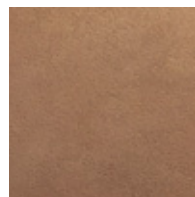
Nero

LEATHER BRUSIO

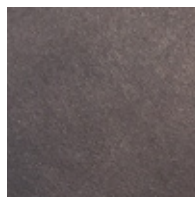
Type: Aniline leather with a distinctive matt appearance with a beeswax finish. Source: Italy



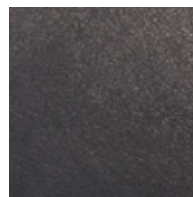
Cashew



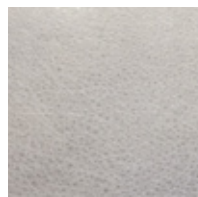
Barley



Mocca



Nero



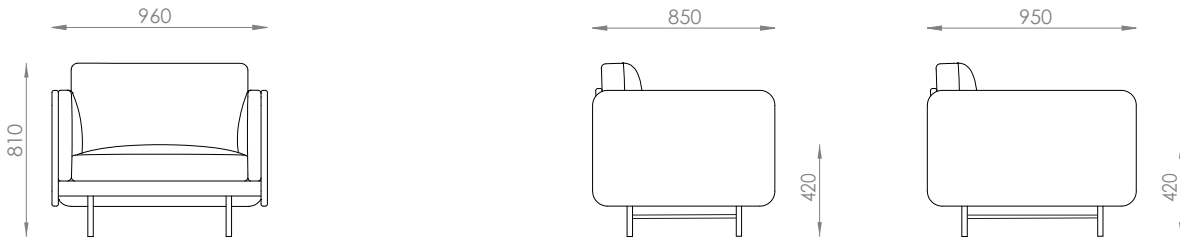
Fog

** Custom fabrics or COM (customer's own materials) are available to trade only.

TOULOUSE SOFA

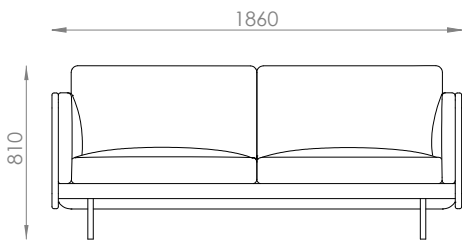
Armchair

L:960x D:850/950 x H: 810mm



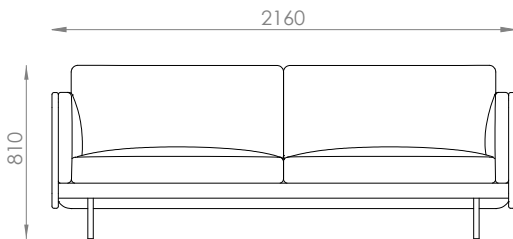
2.5 seater

L:1860 x D: 850/950 x H: 810mm



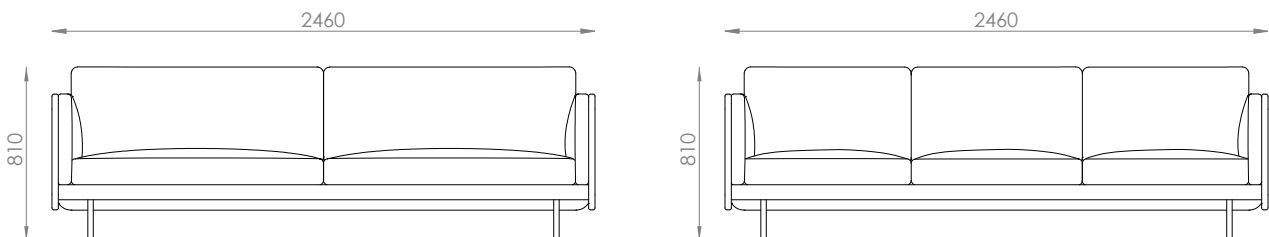
3.0 seater

L:2160x W:850/950 x H: 810mm



3.5 seater (also available with 3 cushions)

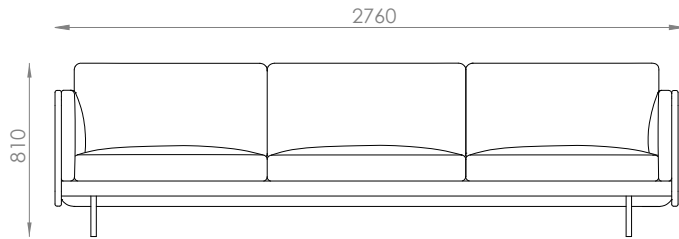
L:2460 x W:850/950 x H: 810mm



TOULOUSE SOFA

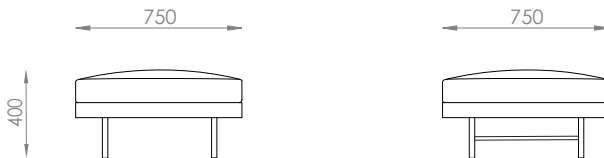
4.0 seater

L:2700 x W:850/950 x H: 810mm



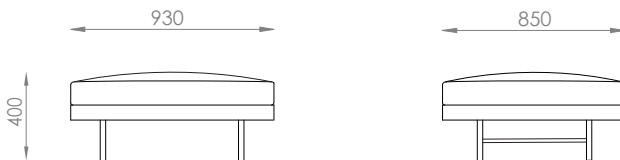
Small ottoman

L:750 x W:750 x H: 400mm



Medium ottoman

L:930 x W:850 x H: 400mm



Large ottoman

L:1080 x W:850 x H: 400mm

