

# ZOLA OTTOMANS



Inspired by the French writer and his novel "Le Ventre de Paris" (The Belly of Paris) the Zola ottomans have the "rondeurs" that come with enjoying life to the full. Versatile, they can take a more fun or sophisticated look based on their surroundings.

#### OPTIONS:

Custom sizes are available. Castors options available on request. Please contact us for details.

#### MATERIALS & FINISHES:

Hardwood and plywood frame with high resilience and luxura foams. On plastic glides.

Upholstery: A range of upholstery is available

#### DIMENSIONS:

##### Small ottoman

---

dia: 530 x H: 450mm

##### Medium ottoman

---

dia: 830x H: 400mm

##### Large ottoman

---

dia: 1030 x H: 400mm

##### Extra Large ottoman

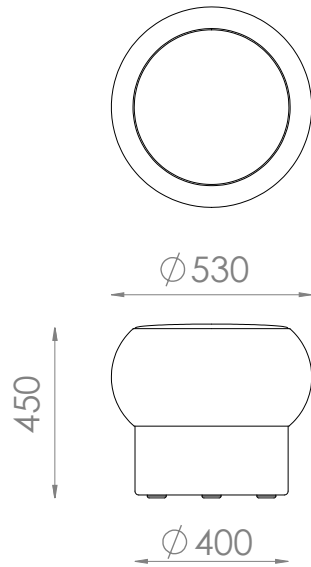
---

dia: 1230 x H: 400mm

# ZOLA OTTOMANS

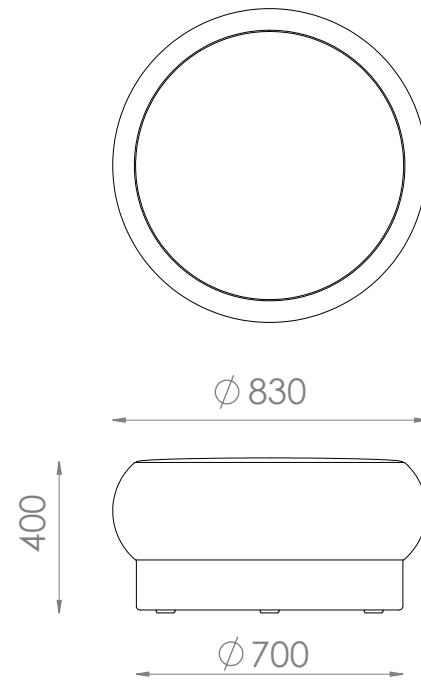
## Small ottoman

dia: 530 x H: 450mm



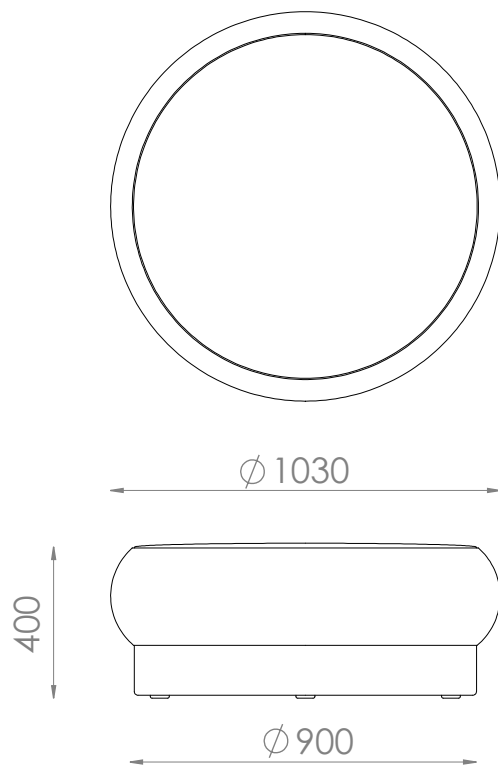
## Medium ottoman

dia: 830x H: 400mm



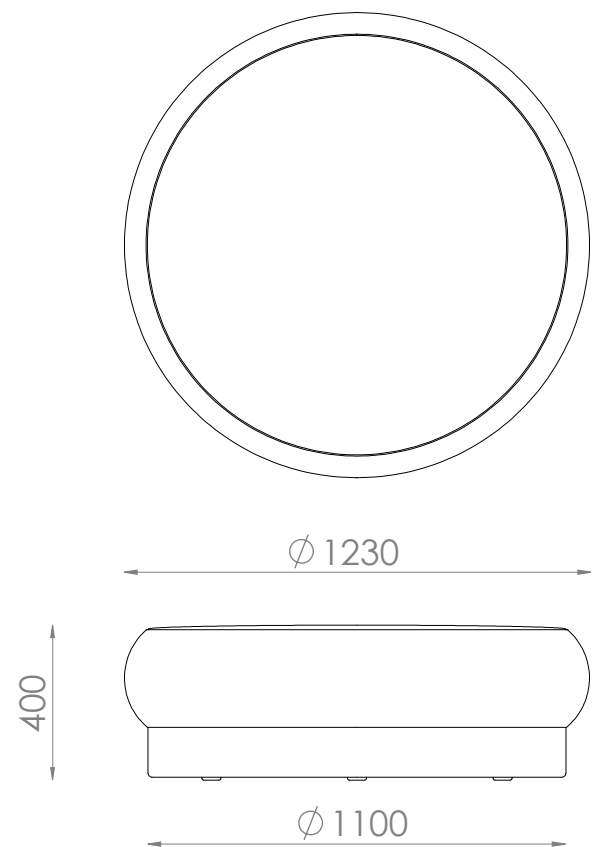
## Large ottoman

dia: 1030 x H: 400mm



## Extra Large ottoman

dia: 1230 x H: 400mm



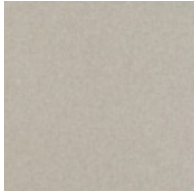
# ZOLA OTTOMANS

## FABRIC SELECTION

### WOOL BLENDS

#### AUGUSTUS

Composition: 70% wool, 25% polyamide, 5% Acrylic



Birch



Pumice



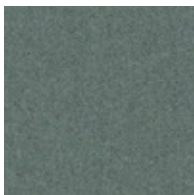
Zinc



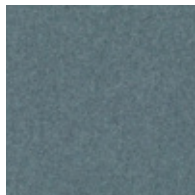
Wolf



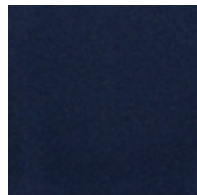
Armour



Seaglass



Ocean



Midnight

#### NATIVE

Composition: 90% Australian low pesticide EU-certified eco wool, 10% nylon



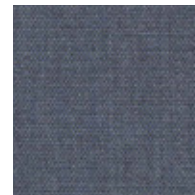
Silver Ash



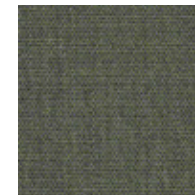
Iron Bark



Habitat



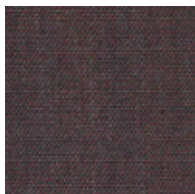
Coastline



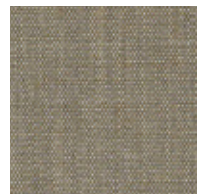
Eucalyptus



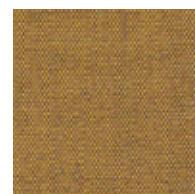
Guide



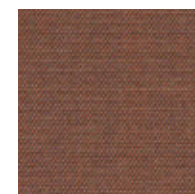
Art



Paperbark



Wattleseed



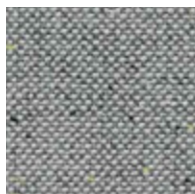
Red Ochre

#### CALIBRE

Composition: 82% Australian wool, 18% nylon



Dandy



Integrity



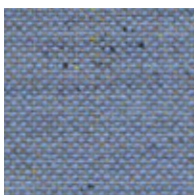
Esteem



Worth



Distinction



Luminary



Ultimate



Opus

\*\* Custom fabrics or COM (customer's own materials) are available to trade only.

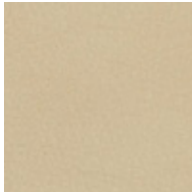
\*\* Some materials will have more stretch than others. Depending on your selection, the ottomans may have additional seams and a discreet zip.

# ZOLA OTTOMANS

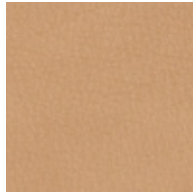
## LEATHER SELECTION

### LEATHER NATUR

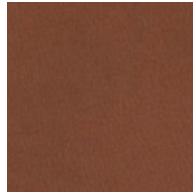
Type: Supple semi-aniline leather with a slight grain texture. Source: Italy



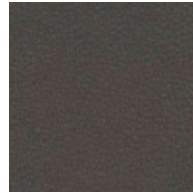
Stone



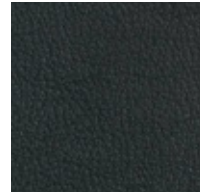
Camel



Toffee



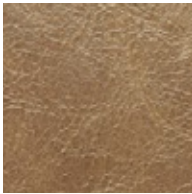
Coffee



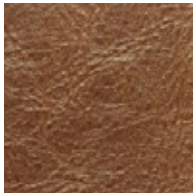
Black

### LEATHER ANTICO

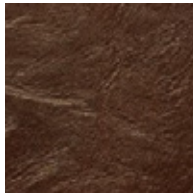
Type: Aniline with an aged Pull up effect. Source: Italy



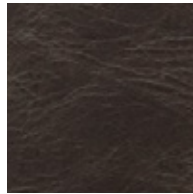
Torrone



Sella



Crosta



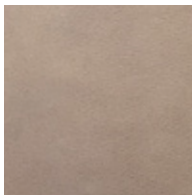
Fumo



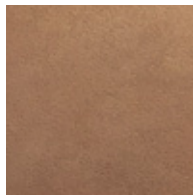
Nero

### LEATHER BRUSIO

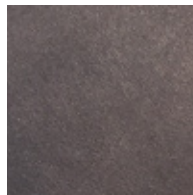
Type: Aniline leather with a distinctive matt appearance with a beeswax finish. Source: Italy



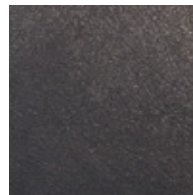
Cashew



Barley



Mocca



Nero



Fog

\*\* Custom fabrics or COM (customer's own materials) are available to trade only.

\*\* Some materials will have more stretch than others. Depending on your selection, the ottomans may have additional seams and a discreet zip.